



NABU - Nature And Biodiversity Conservation Union

## “Fishing for Litter” in Germany

Bruna Campos

BirdLife Europe & Central Asia

Stop Litter now! Summit 2016

# Together we are BirdLife International



The global Partnership for **nature** and **people**

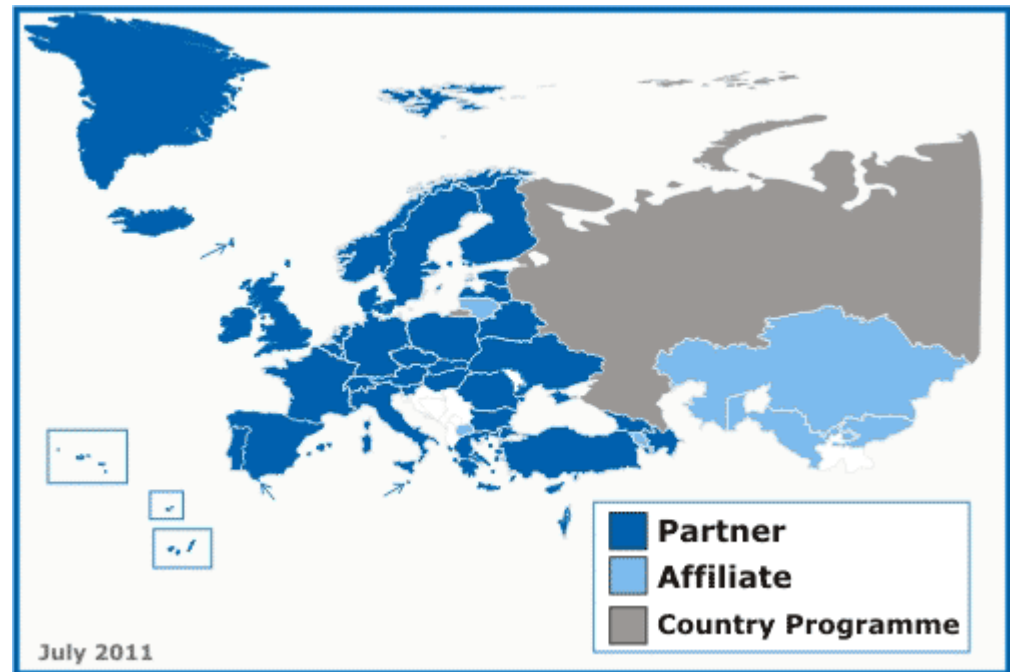
# BirdLife International

- We are the world's largest nature conservation Partnership
- 120 Partners worldwide - 1 per country
- 13 million members & supporters

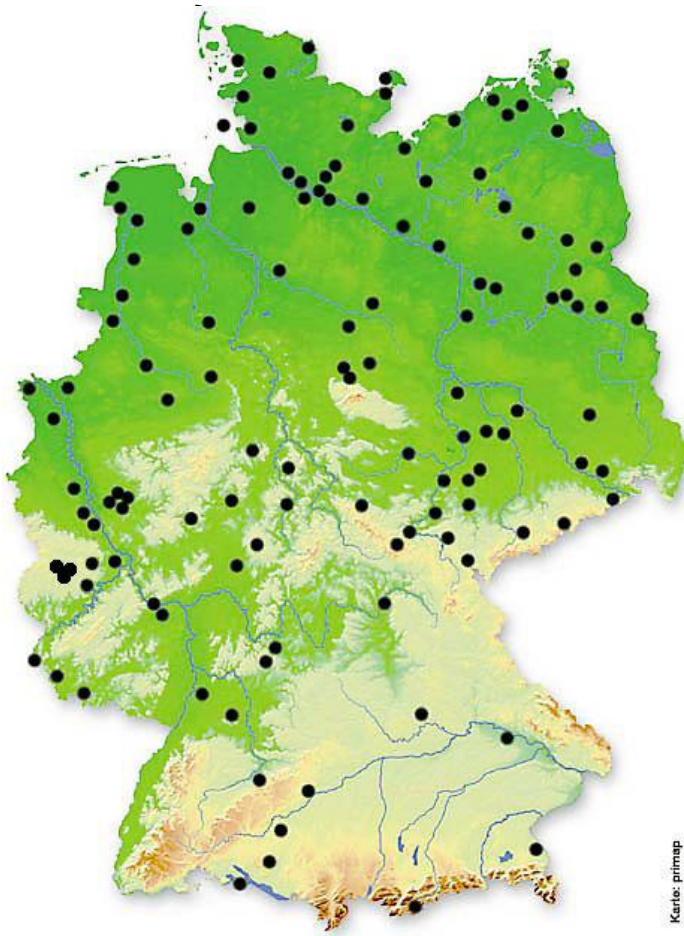


# European and Central Asian Partnership of BirdLife International

- 48 countries
- Based in Brussels
- 4.100 staff in Europe
- 2 million members
- Tens of thousands of skilled volunteers
- Owns or manages more than 5800 sites totalling 320,000 hectares
- Work mainly on EU Policy related to safeguarding environment and biodiversity



# NABU's work...



- Care for more than 5,000 NABU nature reserves nationwide
- Local groups manage more than 110,000 ha of land
- NABU an important NGO in nature conservation and management in Germany

## Marine Programme

- Projects testing alternative fishing methods to reduce bycatch
- Identification and management of MPAs
- **Eliminating marine litter**

# Marine litter...

## ...a global problem!

- 10 million tons of litter end up in our oceans every year (~75 % plastic)
- 18.000 plastic particles/km<sup>2</sup> surface area
- “Tip of the iceberg”: 70 % of the litter remain on the bottom
- Ecological, aesthetical and socio-economical problems
- UNEP: costs of 13 billion \$/year (tourism, fishery, environmental protection)



# Main sources

## Entry from land (~ 80 %)

- Urban wastewater, waste dumps
- Tourism, leisure activities
- Illegal removal of waste

## Shipping industry

- Ships still illegally dump their waste into the oceans despite international laws

## Fishing industry

- Lost fishery equipment

## Offshore industry

- Aquaculture facilities
- Oil and gas platforms



# NABU-Project – “Seas without Plastics”

## Aims and objectives:

- Prevention of marine litter
- Improving resource efficiency and durability of products
- Promoting reuse, waste separation and recycling
- Public outreach and education





# NABU-Project – “Seas without Plastics” cont.

## Activities:

- Aims to develop regional strategies to address marine litter
- Coastal cleanup activities & beach litter monitoring
- Public relations and environmental education
- (Inter)national working groups
- **Fishing for Litter** pilot project in Germany



# An Integrated Approach

- From fishers to conservationists...
- A common goal: clean and productive seas
- Regional stakeholder involvement & joint project activities
- Voluntary scheme according to the KIMO approach
- The idea behind: as easy as it is effective
- Three-chaneled approach: cleaning - local environmental improvement; awareness raising; data gathering



# The Fishing for Litter Initiative

- Recovering litter free of charge for the fishers
- Big bags, containers and coordination
- NO extra trips and NO financial compensation → “Litter-Bycatch”
- Launch: May 2011 with 2 harbours and 12 fishers in S-H
- Today: 12 harbours and > 140 fishers involved
- Monitoring for the EU-Marine Strategy Framework Directive and of OSPAR and HELCOM Regional Action Plans



# Litter Analysis

- All litter collected will be analysed
- Learn about composition and amount of marine litter
- Investigate recyclability of selected material groups (Chemical quality analysis of plastics)
- Identify sources and origin of items in order to develop and support effective measures



# Litter Analysis cont.

## Results (2015):

- Approx. 15 t recovered
- Approx. 75 % plastic
- Sources: shipping, fisheries, offshore industry, tourism, ...



# Conclusions & future outlook

- Objective: area-wide system: approx. 20 harbours GER
- EMFF funds “just” for logistics, NO additional income (So far, financial support by federal states)
- Voluntary schemes do work: UK, NL, B, SWE, GER, ESP
- Link to CFP: help fishers develop environmentally-sound practices
- Ecological footprint (gear types, by-catch, CO<sub>2</sub>-emissions)
- Evaluate efficiency and economic gain
- Analyse if one scheme fits all



# Thanks for your attention!



Bruna Campos  
[Bruna.campos@birdlife.org](mailto:Bruna.campos@birdlife.org)

For further questions please contact: Dr. Kim Cornelius Detloff ([Kim.Detloff@nabu.de](mailto:Kim.Detloff@nabu.de))